

## Test Report

Report Number: 150615032GZU-001

Applicant's name: C&H EUROPE LP  
Address: Summit House, 4-5 Mitchell Street,  
Edinburgh, EH6 7BD, Scotland, UK

Report Date: June 30, 2015

### Sample Description

Product : Air conditioner, inverter, split-type wall-mounted  
Brand Name : C&H  
Model No. : CH-S24FTX5, CH-S24FTXLA

Electrical Rating : 220-240V~, 50Hz, R410A, Class I, IP24 for outdoor unit,  
Cooling: 3700W; Heating: 3800W

No. of Samples : 3

Date Received : June 15, 2015

Date Test Conducted : June 15, 2015 to June 30, 2015

### Test specification

Test standards : EN 60335-1:2012 + A11:2014  
EN 60335-2-40:2003 + A11:2004 + A12:2005 + A1:2006 + A2:2009 +  
A13:2012  
EN 62233:2008

Test Result : See the attached sheets.

Conclusion : The submitted samples complied the above safety standards / requirements.

Prepared by:



Victor Zeng  
Engineer

Checked by:



Forest Wan  
Technical Team Leader

- . The test results reported in this test report shall refer only to the sample actually tested and shall not refer or be deemed to refer to bulk from which such a sample may be said to have been obtained.
- . This report shall not be reproduced except in full without prior authorization from Intertek Testing Services Shenzhen Ltd. GZ Branch.
- . The services are provided subject to the terms and condition of the company, which can be furnished upon request.
- . The evaluation data of the report will be kept for 3 years from the date of issuance.

Note:

1. This report is for the exclusive use of Intertek's Client and is provided pursuant to the agreement between Intertek and its Client. Intertek's responsibility and liability are limited to the terms and conditions of the agreement. Intertek assumes no liability to any party, other than to the Client in accordance with the agreement, for any loss, expense or damage occasioned by the use of this report. Only the Client is authorized to permit copying or distribution of this report and then only in its entirety. Any use of the Intertek name or one of its marks for the sale or advertisement of the tested material, product or service must first be approved in writing by Intertek. The observations and test results in this report are relevant only to the sample tested. This report by itself does not imply that the material, product, or service is or has ever been under an Intertek certification program. The test report only allows to be revised only within the report defined retention period unless standard or regulation was withdrawn or invalid.
2. When determining the test conclusion, the Measurement Uncertainty of test has been considered.
3. It is class I appliance and with provision for earthing.
4. **General product information:**
5. The split type air conditioner can operate in 2 modes, cooling and heating. The appliance provides cooling and heating by reversing the refrigerating cycle through a 4-way valve.

The main power is supplied by two single-phase, 3-pole supply cords without plug, the one is for indoor unit, and another is for outdoor unit. Outdoor and indoor unit are connected by interconnection cord.

6. **Name and address of factory (ies):**

Gree Electric Appliances, Inc. of Zhuhai

Jinji West Road, Qianshan, Zhuhai, Guangdong 519070, P. R. China

Test Results:

<u>Clause</u>	<u>Title/Description</u>	<u>Result</u>
<b>Clause</b>	<b>Description Requirement</b>	<b>Verdict</b>
6	Classification	P
7	Marking and instructions	P
8	Protection against access to live parts	P
9	Starting of motor-operated appliances	N/A
10	Power input and current	P
11	Heating	P
12	Void	--
13	Leakage current and electric strength at operating temperature	P
14	Transient overvoltages	N/A
15	Moisture resistance	P
16	Leakage current and electric strength	P
17	Overload protection of transformers and associated circuits	N/A
18	Endurance	N/A
19	Abnormal operation	P
20	Stability and mechanical hazards	P
21	Mechanical strength	P
22	Construction	P
23	Internal wiring	P
24	Components	P
25	Supply connection and external flexible cords	P
26	Terminals for external conductors	P
27	Provision for earthing	P
28	Screws and connections	P
29	Clearances, creepage distances and solid insulation	P
30	Resistance to heat and fire	P
31	Resistance to rusting	P
32	Radiation, toxicity and similar hazards	P

Test Results:

<u>Annexes</u>	<u>Title/Description</u>	<u>Result</u>
<b>Annexes</b>	<b>Description Requirement</b>	<b>Verdict</b>
A	Routine tests	Not checked
B	Appliances powered by rechargeable batteries	N/A
C	Ageing test on motors	N/A
D	Thermal motor protectors	N/A
E	Needle flame test	P
F	Capacitors	N/A
G	Safety isolating transformers	N/A
H	Switches	N/A
I	Motors not isolated from the supply mains and having basic insulation not designed for the rated voltage of the appliance	N/A
J	Coated printed circuit boards	N/A
K	Overvoltage categories	P
L	Guidance for the measurement of clearances and creepage distances	N/A
M	Pollution degree	N/A
N	Proof tracking test	N/A
O	Selection and sequence of the tests of clause 30	P
P	Guidance for the application of this standard to appliances used in warm damp equable climates	N/A
Q	Sequence of tests for the evaluation of electronic circuits	N/A
R	Software evaluation	N/A
ZA	Special national conditions	P
ZB	A-deviations	N/A
ZC	Normative references to international publication with their corresponding European publications	P
ZD	IEC and CENELEC code designations for flexible cords	P

Appendix A:

Table of critical components and materials

object/part No.	Manufacturer/ trademark <sup>2)</sup>	Type / model <sup>2)</sup>	technical data	standard	mark(s) of conformity <sup>1)</sup>
Indoor unit:					
Power cord	Guangdong Huasheng Electrical Appliances Co., Ltd.	H05VV-F	3G2,5mm <sup>2</sup>	DIN VDE 0281- 5	VDE 40005362
Interconnection cord	Eastwire Industri al Limited	H07RN-F	4G2,5mm <sup>2</sup>	DIN VDE 0282- 4	VDE 40016464
Alternative	Guangdong Huasheng Electr ical Appliances Co., Ltd.	H07RN-F	4G2,5mm <sup>2</sup>	DIN VDE 0282- 4	VDE 40016788
Alternative	GuangDong RiFeng Electric cable Co., Ltd.	H07RN-F	4G2,5mm <sup>2</sup>	DIN VDE 0282- 4	VDE 40015999
Terminal Board	Changzhou Kaidu Electrical Co., Ltd.	JX-G-4C	AC250V; 2,5mm <sup>2</sup>	EN60998-1 EN60998-2	VDE 40020936
Alternative	Zhenjiang Honglian Electrician Co., Ltd.	JX1239	AC250V; 2,5mm <sup>2</sup>	EN60335-2-40	Tested with appliance
Alternative	Nantong Huaguan Electric Co., Ltd.	JXW-4-G1	AC250V; 2,5mm <sup>2</sup>	EN60998-1 EN60998-2-1	VDE 40013197
Alternative	Zhenjiang Honglian Electrician Co Ltd	JXG3	AC450V; 2,5mm <sup>2</sup>	EN 60998-2-1 EN 60998-1	TÜV Rheinland R50096041
Swing motor	Changzhou Leshileili Motor Co; Ltd	MP24HF	DC12V; Main: 150±7%Ω; Class A	EN 60335-2-40	Tested with appliance
Alternative	Changzhou Oukai Electrical Appliance Co.; Ltd	MP24HF	DC12V; Class A; Main:200±8%Ω	EN 60335-2-40	Tested with appliance

Cold Plasma Generator	Shandong Xuesheng Technology Co., Ltd.	XS-PL-06	220-240VAC; 50/60Hz; ≤2W	EN60335-1 EN60335-2-65	TÜV Rheinland 50172899
Indoor fan motor	Zhuhai Kaibang Motor Manufacturing Co., Ltd.	FN35A-PG	220-240V; 50Hz; 35W; 0,35A; Main:125±8%Ω; Aux:147,7±8%Ω ; Class E	EN 60335-2-40	Tested with appliance
-Fan motor protector	Jiangsu Changsheng Electric Appliance Co., Ltd.	BR-B5D	250V; 5A; Operation:100° C	EN 60730-1	VDE 40015984
-Alternative	Changzhou Changhong Tongli Electric Appliance Co., Ltd.	KW Series	250V; 8A; Operation:100° C	EN 60730-1	VDE 40020906
-Alternative	Sensata Technologies Holland; B.V.	BRL Series	250V; 8A; Operation: 100°C	EN 60730-1	KEMA 2089558.01
-Fan motor capacitor	Ningbo Shine Electrical Co., Ltd.	CBB61S	3μF; 450V; T70	EN 60252-1	TÜV Rheinland 50076953
-Alternative	Shanghai Haoye Capacitors Co., Ltd.	MKPS	3uF; 450V; T70	EN 60252-1	TÜV Rheinland 50035566
Main Board	GREE	M870F2HJ	----	EN 60335-2-40	Tested with appliance
Alternative	GREE	M870F2PJ	----	EN 60335-2-40	Tested with appliance
Alternative	GREE	M870F2XJ	----	EN 60335-2-40	Tested with appliance
Alternative	GREE	M555F2RJ	----	EN 60335-2-40	Tested with appliance
-PCB material	CHANG CHUN PLASTICS CO., LTD.	CCP-508	CEM-1; 94V-0; CTI≥175V	EN 60335-2-40 UL 94	Tested with appliance UL E108591
-Alternative	GUANGDONG SHENGYI SCI TECH CO., LTD.	S3116	CEM-1; 94V-0; CTI≥175V	EN 60335-2-40 UL 94	Tested with appliance UL E109769
-Alternative	GUANGDONG SHENGYI SCI TECH CO., LTD.	S1141	FR-4; 94V-0; CTI≥175V	EN 60335-2-40 UL 94	Tested with appliance UL E109769

-Alternative	GUANGDONG SHENGYI SCI TECH CO., LTD.	S3110	CEM-1; 94V-0; CTI≥175V	EN 60335-2-40 UL 94	Tested with appliance UL E109769
-Alternative	CHANG CHUN PLASTICS CO., LTD.	KB3151C	FR-1; 94V-0; CTI≥175V	EN 60335-2-40 UL 94	Tested with appliance UL E123995
-Fuse	HollylandCo., Ltd.	50CT	250V; 3,15A	EN60127-1 EN60127-2	VDE 40014896
-Alternative	WalterElectronic Co.,Ltd.	TSC	250V; 3,15A	EN60127-1 EN60127-2	VDE 40016670
-Varistor	Chengdu Tieda Electronic Co., Ltd.	MYN15-621K	385VAC; T85	EN 61051-1	VDE 40008571
-Alternative	Xianhua Advanced Sensitive Components Co., Ltd.	FNR-14K621	385VAC; T85	EN 61051-1	VDE 40008242
-Alternative	Thinking Electronic Industrial Co., Ltd.	TVR14621*	395V(r.m.s)AC; T85	EN 61051-1	VDE 40021243
-X capacitor	Xiamen Faratronic Co. Ltd.	MKP62	104M; 275V; T110	EN 60384-14	VDE 40000358
-Alternative	Anhui Xinyang Electronics Co., Ltd.	MKP	0.1μF; 275V; T100	EN 60384-14	VDE 40024537
-Alternative	Okaya Electric Industries Co., Ltd.	LE104	0.1μF; 275V; T100	EN 60384-14	ENEC SE/0142-1D
-Y capacitor	TDK-EPC Corporation, Capacitors Group	CD222M	Y2; 250VAC; 222M; 2200pF; T125	EN 60384-14	VDE 40029780
-Alternative	Murata Mfg. Co., Ltd. (Headquarters)	KX222M	Y2; 250VAC; 222M; 2200pF; T125	EN 60384-14	VDE 40002831
-Opto-coupler	Toshiba Corporation	TLP781	Vceo:80V; If=60mA; Ic:50mA	EN 60747-5-2	VDE 40021173
-Alternative	Sharp Corporation	PC817	Vceo:80V; If:50mA; Ic:50mA	EN 60747-5-2	VDE 40008087
-Alternative	Sharp Corporation	3SD11	Vdrm:600V; If:50mA; It:0.1A	EN 60747-5-2	VDE 40008189

-Alternative	Toshiba Corporation	TLP785	Vceo:80V; If:60mA; Ic:50mA	EN 60747-5-2	VDE 40031808
-Rectifier	SHINDENGEN ELECTRIC MFG CO., LTD.	NC 80	600V; 1,5A	EN 60335-2-40	Tested with appliance
-Inductance	XINJI ELECTRONICS COMPONENT( HANGZHOU) CO., LTD.	10uH	10uH; 1,5A	EN 60335-2-40	Tested with appliance
-Alternative	Shenzhen Yamaxi Electronic Co., Ltd.	10uH	10uH; 1,5A	EN 60335-2-40	Tested with appliance
-Alternative	Dongguan Dazhong Electronic Co., Ltd.	10uH	10uH; 1,5A	EN 60335-2-40	Tested with appliance
-Alternative	Hangzhou Ruichuang Industry And Trade Co., Ltd.	200uH	200uH; 2A	EN 60335-2-40	Tested with appliance
-Alternative	XINJI ELECTRONICS COMPONENT( HANGZHOU) CO., LTD.	200uH	200uH; 2A	EN 60335-2-40	Tested with appliance
-Alternative	Shenzhen Yamaxi Electronic Co., Ltd.	T50-26	200uH; 2A	EN 60335-2-40	Tested with appliance
-Alternative	HUIZHOU JIAYANG ELECTRONIC NEW-TECH CO., LTD.	200uH/2A	200uH; 2A	EN 60335-2-40	Tested with appliance
-Alternative	Fenghua Advanced Technology(Holding) Co., Ltd.	200uH/2A	200uH; 2A	EN 60335-2-40	Tested with appliance
-Alternative	Dongguan Dazhong Electronic Co., Ltd.	200uH/2A	200uH; 2A	EN 60335-2-40	Tested with appliance



-Filter	XINJI ELECTRONICS COMPONENT(HANGZHOU) CO., LTD.	SF2022A-05220	AC250V; 0,5A	EN 60335-2-40	Tested with appliance
-Alternative	SHENZHEN YAMAXI ELECTRONIC CO., LTD.	SF2022A-05220	AC250V; 0,5A	EN 60335-2-40	Tested with appliance
-Alternative	DAZHONG ELECTRONIC CO., LTD.	SF2022A-05220	AC250V; 0,5A	EN 60335-2-40	Tested with appliance
-Alternative	Qingdao Yunlu energy technology Co., Ltd.	LB0522	AC250V; 0,5A	EN 60335-2-40	Tested with appliance
-High Frequency Transformer	DONGGUAN DAZHONG ELECTRONIC CO., LTD.	EE22-9D	Input:85-265V,132KHZ; output:12V; Winding-Pri.:(4-1)3,0Ω MAX,(6-7)118mΩ MAX; Winding-Sec.:(10-9)70mΩ MAX; L- Pri.:2,2mH±10% ; L-Sec.:50uH MAX; Class E	EN 60335-2-40	Tested with appliance
-High Frequency Transformer for main board M555F2RJ	SHENZHEN YAMAXI ELECTRONICS CO.;LTD	ECO20-9PA	Input:≤250V, 5~132KHz; Output:12V, 5V, 15V; Pri.:R(3-1)≤1.05Ω; R(6-5)≤110mΩ; Sec.:R(8-7)≤25mΩ R(11-12)≤35mΩ; L- Pri.:733uH±10% , Lk-Pri.:25uH MAX; Class B	EN 60335-2-40	Tested with appliance

-Alternative	HUIZHOU JIAYANG ELECTRONIC CORE NEW- TECH CO.;LTD	ECO20-9PA	Input:AC85V~26 5V;132KHz; Output: P(8-7)5V, P(12-11)12V, P(6-5)15V; Pri.: P(3- 1)1.05Ω MAX; Sec.:P(6- 5)110mΩ MAX; P(8-7)25mΩ MAX; P(11-12) 35mΩ MAX;  L-Pri.: 0.733mH±10%; Lk-Pri.:25uH MAX; Class B	EN 60335-2-40	Tested with appliance
-Alternative	DONGGUAN DAZHONG ELECTRONIC CO.;LTD	ECO20-9PA (ECO20)	Input:≤250V, 5~132KHz; Output:12V, 5V, 15V; Pri.:R(3- 1)≤1.05Ω; R(6- 5)≤110mΩ; Sec.:R(8- 7)≤25mΩ R(11- 12)≤35mΩ; L- Pri.:733uH±10% , Lk-Pri.:25uH MAX; Class B	EN 60335-2-40	Tested with appliance
-Relay 1#	Sharp Corporation	R3BMF5	250VAC; 1,2A; T85	EN 61810-1	VDE 40008898
-Alternative	Matsushita Electric Works Ltd.	AQH3223	250VAC; 1,2A; T85	EN 61810-1	VDE 40004928
-Alternative	Xiamen Hongfa Electroacoustics Co., Ltd.	JZC-43F	250VAC; 3A; T85	EN 61810-1	VDE 40002220
-Alternative	OMRON Corporation	G5NB-1A	250VAC; 5A; T85; 100000 cycles	EN 61810-1	VDE 137575
-Alternative	Dongguan Sanyou Electrical Appliances CO., Ltd.	SRB-S-112DM	277VAC; 5A; T85	EN 61810-1	TÜV Rheinland 50138320
-Alternative	Dongguan Churod Electronics Co., Ltd.	CHM-S-112DA3	250VAC; 5A; T90	EN 61810-1	TÜV Rheinland 50196152

-Alternative	Song Chuan Precision Co., Ltd.	202N-1AC-C	250VAC; 5A; T85	EN 61810-1	VDE 40008369
-Alternative	Tyco Electronics EC K.K.	PCJ-112D3M	250VAC; 3A; T90	EN 61810-1	VDE 40009151
-Alternative	Xiamen Hongfa Electroacoustics Co., Ltd.	JZC-32F	250VAC; 5A; T70	EN 61810-1	VDE:40012204
-Alternative	Dongguan Sanyou Electrical Appliances Co., Ltd.	SJ-S-112DM	250VAC; 5A; T85	EN 61810-1	VDE:40002146
-Alternative	Dongguan Churod Electronics Co., Ltd.	A1-S-112DA	250VAC; 5A; T85	EN 61810-1	TÜV Rheinland R50174892
-Alternative	Song Chuan Precision Co., Ltd.	307-1AH-C	250VAC; 5A; T85	EN 61810-1	TÜV Rheinland R50128391
-Alternative	Tyco Electronics (Shenzhen) Co., Ltd.	OJE-SS-112DM	250VAC; 5A; T70	EN 61810-1	TÜV Rheinland R50139166
-Relay 2#	OMRON Relay & Devices Corporation	G4A-1A-E	250VAC; 20A; T85	EN61810-1	TÜV Rheinland 50214482
-Alternative	OMRON Corporation	G4A-1A-E	250VAC; 20A; T50	EN 61810-1	VDE 107293
-Alternative	Tyco Electronics(Shenzhen) Co., Ltd.	PCF-112D2M	250VAC; 25A; T55	EN 61810-1	TÜV Rheinland 50139097
-Alternative	Dongguan Churod Electronics Co., Ltd.	CHF-V-112DA2	250VAC; 25A; T85	EN 61810-1	TÜV Rheinland R50220099
Outdoor unit:					
Terminal Board	Changzhou Kaidu Electrical Co., Ltd.	JXD-3	AC450V; 2,5mm <sup>2</sup>	EN 60335-2-40	Tested with appliance
-Alternative	Nantong Huaguan Electric Co., Ltd.	JXW	AC450V; 2,5mm <sup>2</sup>	EN 60335-2-40	Tested with appliance
Alternative	Zhenjiang Honglian Electrician Co., Ltd	JXG3	AC450V; 2,5mm <sup>2</sup>	EN 60998-2-1 EN 60998-1	TÜV Rheinland R50096041

Compressor	Zhuhai Landa Compressor Co., Ltd.	QXAS-D23zX090A	260-350Vd.c; 15-120Hz; 3PH; RLA11,5A; 2550W; 0.99±7%Ω(at 25°C); Class B	EN 60335-1 EN 60335-2-34	TÜV Rheinland 50135262
-Compressor Overload Protector	Sensata technologies (Baoying) Co., Ltd.	1NT11L-6233	Operation:115± 3°C; Reset: 95±5°C	EN 60730-1 EN 60730-2-9	KEMA 2014531.16
-Alternative	Jiangsu Changheng (Group) Control Devices & Products Co., Ltd.	KSD	Operation:115° C; Reset: 95±5°C	EN 60730-2-9	VDE 40022995
-Alternative	Changzhou Changrong Electrical Appliance Co., Ltd.	HPC	Operation:115° C; Reset: 95±5°C	EN 60730-2-9	VDE 40032296
4-Way Valve	Zhejiang Dunan Artificial Environmental Equipment Co., Ltd.	DSF-9-R410A	AC220V-240V; 50/60Hz; 7/5W; 1970±197Ω; Class B	EN 60730-1	VDE 40013212
Alternative	Zhejiang Dunan Artificial Environment Co.; Ltd.	DSF-9-R410A	AC220V-240V; 50/60Hz; 7/5W; 1970±197Ω; Class B	EN 60730-1	TÜV Rheinland 50197052
Alternative	Zhejiang Sanhua Climate and Appliance Controls Group Co.; Ltd.	SHF-7H-34U-PG	AC220-240V; 50/60Hz; 4,5/3,5W; Class B; 2085±208Ω	EN 60730-1	VDE 40003240
4-Way Valve	Zhongshan Gangli Refrigeration Accessory Co., Ltd.	SHF-7	AC220-240V; 50/60Hz; 4,5/3,5W; Class B; 2100Ω±150Ω	EN 60730-1	VDE 40026249
Outdoor fan motor	Zhuhai Kaibang Motor Manufacturing Co., Ltd.	LW60M-ZL	DC200-370V; 60W; Class E	EN 60335-2-40	Tested with appliance
Main Board	GREE	W8603	----	EN 60335-2-40	Tested with appliance
-PCB material	CHANG CHUN PLASTICS CO., LTD.	CCP-508	CEM-1; 94V-0; CTI≥175V	EN 60335-2-40 UL 94	Tested with appliance UL E108591

-Alternative	GUANGDONG SHENGYI SCI TECH CO., LTD.	S3116	CEM-1; 94V-0; CTI≥175V	EN 60335-2-40 UL 94	Tested with appliance UL E109769
-Alternative	GUANGDONG SHENGYI SCI TECH CO., LTD.	S1141	FR-4; 94V-0; CTI≥175V	EN 60335-2-40 UL 94	Tested with appliance UL E109769
-Alternative	GUANGDONG SHENGYI SCI TECH CO., LTD.	S3110	CEM-1; 94V-0; CTI≥175V	EN 60335-2-40 UL 94	Tested with appliance UL E109769
-Alternative	CHANG CHUN PLASTICS CO., LTD.	KB3151C	FR-1; 94V-0; CTI≥175V	EN 60335-2-40 UL 94	Tested with appliance UL E123995
-Fuse	HollylandCo., Ltd.	50CT	250V; 3,15A	EN60127-1 EN60127-2	VDE 40014896
-Rectifier	Shanghai Microsemi Semiconductor Co., Ltd.	GBJ25J	600V; 25A	EN 60335-2-40	Tested with appliance
-Alternative	SHINDENGEN ELECTRIC MFG CO LTD	D25XB 60	600V; 25A	EN 60335-2-40	Tested with appliance
-Alternative	SHINDENGEN ELECTRIC MFG CO LTD	NC 80	600V; 1,5A	EN 60335-2-40	Tested with appliance
-Varistor	Chengdu Tieda Electronic Co., Ltd.	MYN15-621K	385VAC; T85	EN 61051-1	VDE 40008571
-Alternative	Xianhua Advanced Sensitive Components Co., Ltd.	FNR-14K621	380VAC; T85	EN 61051-1	VDE 40008242
-Alternative	Thinking Electronic Industrial Co., Ltd.	TVR14621*	380VAC; T85	EN 61051-1	VDE 40021243
-Y Capacitor	TDK-EPC Corporation, capacitors Group	CS102M	250VAC; 102M	EN 60384-14	VDE 40029781
-Alternative	Murata Mfg. Co., Ltd. (Headquarters)	KY102M	250VAC; 102M	EN 60384 -14	VDE 40006273

-Alternative	TDK-EPC Corporation capacitors Group	CS103M	250VAC; 103M	EN 60384-14	VDE 40029781
-X capacitor	Xiamen Faratronic Co., Ltd.	MKP62	225K; 275V; T110	EN 60384-14	VDE 40000358
-Alternative	Okaya Electric Industries Co., Ltd.	LE225	2,2 $\mu$ F; 275V; T100	EN 60384-14	ENEC SE/0142-1D
-Alternative	Xiamen Faratronic Co., Ltd.	MKP62	684K; 275V; T110	EN 60384-14	VDE 40000358
-Alternative	Okaya Electric Industries Co., Ltd.	LE684	0,68 $\mu$ F; 275V; T100	EN 60384-14	ENEC SE/0142-1D
-Opto-coupler	Toshiba Corporation	TLP781	Vceo:80V; If=60mA; Ic:50mA	EN 60747-5-2	VDE 40021173
-Alternative	Sharp Corporation	PC817	Vceo:80V; If:50mA; Ic:50mA	EN 60747-5-2	VDE 40008087
-Alternative	Toshiba Corporation	TLP785	Vceo:80V; If:60mA; Ic:50mA	EN 60747-5-2	VDE 40031808
-IPM	MITSUBISHI ELECTRIC CORP SEMICONDUCTOR DIV	PS21997-AST	Operation:600V; 30A; Fsw=20KHz; Viso=2500V	EN 60335-2-40	Tested with appliance
-Alternative	Sanken Electric Co.; Ltd.	SIM6812M	500V; 2,5A	EN 60335-2-40	Tested with appliance
-High Frequency Transformer	SHENZHEN YAMAXI ELECTRONICS CO., LTD.	EE20-11PA	$\leq$ 250V; 100kHz; 15V; 12V; Winding-Pri.:R(3-1) $\leq$ 1.80 $\Omega$ , R(6-5) $\leq$ 0.38 $\Omega$ ; Winding-sec.: R(10-9) $\leq$ 30M $\omega$ ; R(11-12) $\leq$ 70m $\Omega$ ; 850uH $\pm$ 10%; 20uH MAX; Class B	EN 60335-2-40	Tested with appliance

-Alternative	HUIZHOU JIAYANG ELECTRONIC CORE NEW- TECH CO., LTD	EE20-11PA	Input:220V; 65KHz; output:P(10-- 9)15V; P(11-- 12)12V; P(6-- 5)18V; winding_pri.:P(3 -1)1,8ΩMAX; winding_sec.:P( 6-5)0,38ΩMAX; P(10- 9)30mΩMAX; P(11- 12)70mΩMAX; 0,85mH±10%; 20uH MAX; Class B	EN 60335-2-40	Tested with appliance
-Relay	Xiamen Hongfa Electroacoustics Co., Ltd.	HF32F-G	250VAC; 10A; T85	EN 61810-1	VDE 40012204
-Alternative	Dongguan Sanyou Electrical Appliances CO., Ltd.	SJ-S-112DM	250VAC; 10A; T85	EN 61810-1	TÜV Rheinland 50142420
-Alternative	Dongguan Churod Electronics Co., Ltd.	A1-S-112HAF	250VAC; 10A; T85	EN 61810-1	TÜV Rheinland 50174892
-Alternative	Song Chuan Precision Co., Ltd.	835-1A-B-C	250VAC; 10A; T85	EN 61810-1	VDE 40010643
-Alternative	Tyco Electronics (Shenzhen) Co., Ltd.	OJE-SS-112HMF	250VAC; 10A; T70	EN 61810-1	TÜV Rheinland 50139166
-Alternative	OMRON Relay & Devices Corporation	G4A-1A-E	250VAC; 20A; T85	EN61810-1	TÜV Rheinland 50214482
-Alternative	OMRON Corporation	G4A-1A-E	250VAC; 20A; T70	EN 61810-1	VDE 107293
-Alternative	Tyco Electronics (Shenzhen) Co., Ltd.	PCF-112D2M	250VAC; 25A; T55	EN 61810-1	TÜV Rheinland 50139097
-Alternative	Xiamen Hongfa Electroacoustics Co., Ltd.	HF160F/12-H5 (501)	20A; 250VAC; T85	EN 61810-1	VDE 40024142
PTC Resistance	Hubei Huagong Gaoli Electronic Co., Ltd.	MZ8IV-B470N	R=47±20%Ω	EN 60335-2-40	Tested with appliance

PTC Resistance	Dandong Guotong Electronic Components Co., Ltd.	MZ-47R-A	R=47(1±20%)	EN 60335-2-40	Tested with appliance
----------------	---	----------	-------------	---------------	--------------------------

- 1) An asterisk indicates a mark which assures the agreed level of surveillance;
- 2) "Various" means any type from any manufacturer that complies with the specification can be used.



Appendix B:

Details of marking description on the sample:

**SPLIT AIR CONDITIONER INDOOR UNIT**  
(Кондиционер воздуха сплит-система. Внутренний блок)

Model (Модель) CH-S24FTX5

Rated Voltage/Frequency 220-240V~/50 Hz  
Capacity (cooling/heating) 6700 W/7250 W  
Power input (cooling/heating) 1875 W/1945 W  
Air Flow Volume 1150 m<sup>3</sup>/h  
Sound Pressure Level(H) 45 dB(A)

Электропитание 220-240В~/50 Гц  
Мощность (охлаждение/обогрев) 6700 Вт/7250 Вт  
Потребляемая мощность (охлаждение/обогрев) 1875 Вт/1945 Вт  
Циркуляция воздуха 1150 м<sup>3</sup>/ч  
Уровень шума 45 дБ(А)

Dimension (Размеры): 1078x325x246 mm  
Refrigerant (Хладагент/фреон): R410A  
Weight (Вес): 17kg  
Efficiency energy consumption (Класс энергоэффективности): A  
Manufactured Date (Дата производства):

**COLD PLASMA**

CE  

Cooper&Hunter International Corporation

**CH**  
Cooper&Hunter  
www.cooperandhunter.com 63229963471

**CH**  
Cooper&Hunter

**AIR CONDITIONER OUTDOOR UNIT**  
(Кондиционер воздуха сплит-система. Наружный блок)

Model (Модель)		CH-S24FTX5	
Voltage/Frequency (Электропитание)	220-240V~/50 Hz	(ISO 5151)	
		Capacity (cooling/heating) (Мощность (охлаждение/обогрев))	6700 W/7250 W
Climate Type (Тип Климата)	T1	Power input (cooling/heating) (Потребляемая мощность (охлаждение/обогрев))	1875 W/1945 W
		Weight (Вес)	53 kg
Isolation (Изоляция)	I	Rated input (cooling/heating) (Максимальная потребляемая мощность (охлаждение/обогрев))	3700 W/3800 W
Refrigerant (Хладагент/фреон)	R410A	Dimension (Размеры)	
Refri. Charge (Масса Хладагента/фреона)	1.9 kg	963x700x396 mm	
Sound Pressure Level (Уровень шума)		60 dB (A)	
Maximum Allowable Pressure (Макс. Допустимое Давление)		4.3 MPa	
Operating Pressure (discharge side/suction side) (Рабочее Давление (сторона высокого давления/ст. всасывания))		4.3/2.5 MPa	
Manufactured Date (Дата производства)		Moisture protection (Влагозащитенность)	IP24

Cooper&Hunter International Corporation www.cooperandhunter.com

CE   IP24 

**CH**  
Cooper&Hunter  
www.cooperandhunter.com 63229963472

**SPLIT AIR CONDITIONER INDOOR UNIT**  
(Кондиционер воздуха сплит-система. Внутренний блок)

Model (Модель) CH-S24FTXLA

Rated Voltage/Frequency 220-240V~/50 Hz  
Capacity (cooling/heating) 6700 W/7250 W  
Power input (cooling/heating) 1875 W/1945 W  
Air Flow Volume 1150 m<sup>3</sup>/h  
Sound Pressure Level(H) 45 dB(A)

Электропитание 220-240В~/50 Гц  
Мощность (охлаждение/обогрев) 6700 Вт/7250 Вт  
Потребляемая мощность (охлаждение/обогрев) 1875 Вт/1945 Вт  
Циркуляция воздуха 1150 м<sup>3</sup>/ч  
Макс. уровень шума 45 дБ(А)

Dimension (Размеры): 1078x325x246 mm  
Refrigerant (Хладагент/фреон): R410A  
Weight (Вес): 17kg  
Efficiency energy consumption (Класс энергоэффективности): A  
Manufactured Date (Дата производства):

**COLD PLASMA**

CE  

Cooper&Hunter International Corporation

**CH**  
Cooper&Hunter  
www.cooperandhunter.com 63229959519

**CH**  
Cooper&Hunter

**AIR CONDITIONER OUTDOOR UNIT**  
(Кондиционер воздуха сплит-система. Наружный блок)

Model (Модель)		CH-S24FTXLA	
Voltage/Frequency (Электропитание)	220-240V~/50 Hz	(ISO 5151)	
		Capacity (cooling/heating) (Мощность (охлаждение/обогрев))	6700 W/7250 W
Climate Type (Тип Климата)	T1	Power input (cooling/heating) (Потребляемая мощность (охлаждение/обогрев))	1875 W/1945 W
		Weight (Вес)	53 kg
Isolation (Изоляция)	I	Rated input (cooling/heating) (Максимальная потребляемая мощность (охлаждение/обогрев))	3700 W/3800 W
Refrigerant (Хладагент/фреон)	R410A	Dimension (Размеры)	
Refri. Charge (Масса Хладагента/фреона)	1.9 kg	963x700x396 mm	
Sound Pressure Level (Уровень шума)		60 dB (A)	
Maximum Allowable Pressure (Макс. Допустимое Давление)		4.3 MPa	
Operating Pressure (discharge side/suction side) (Рабочее Давление (сторона высокого давления/ст. всасывания))		4.3/2.5 MPa	
Manufactured Date (Дата производства)		Moisture protection (Влагозащитенность)	IP24

Cooper&Hunter International Corporation www.cooperandhunter.com

CE   IP24 

**CH**  
Cooper&Hunter  
www.cooperandhunter.com 63229959520

Appendix C:

Product Photo:

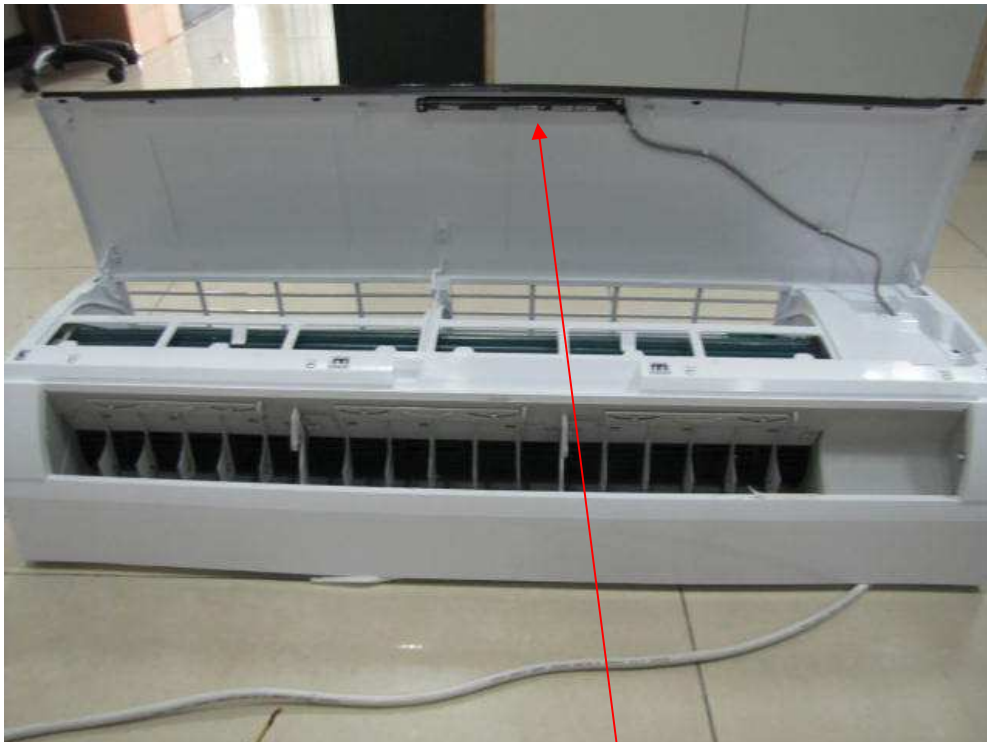
Indoor unit:



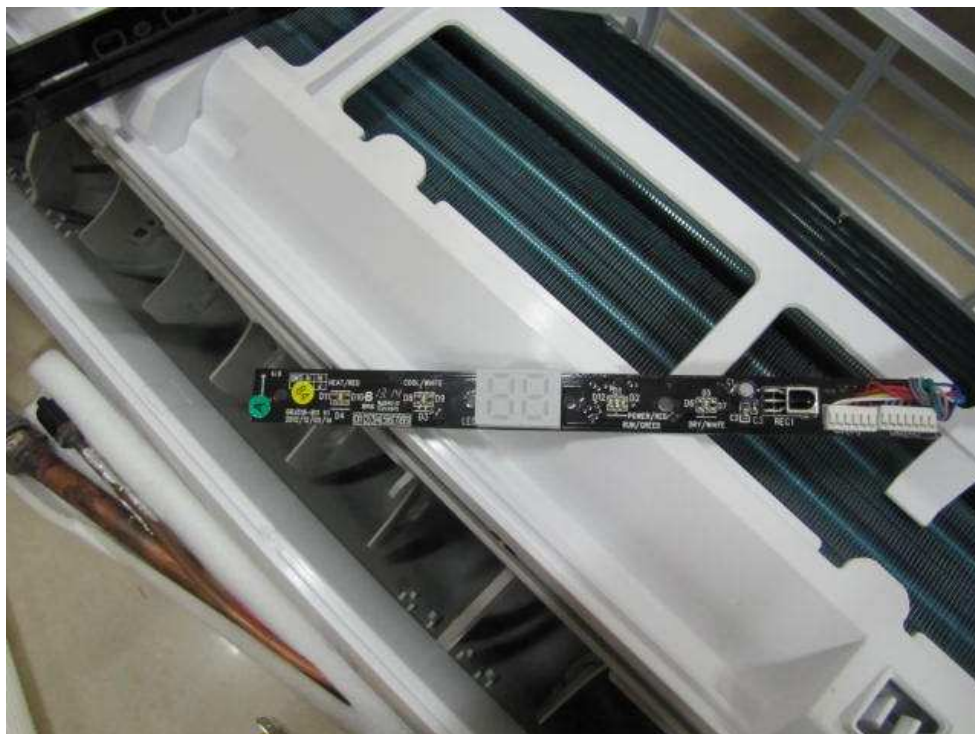
Front view of CH-S24FTXLA



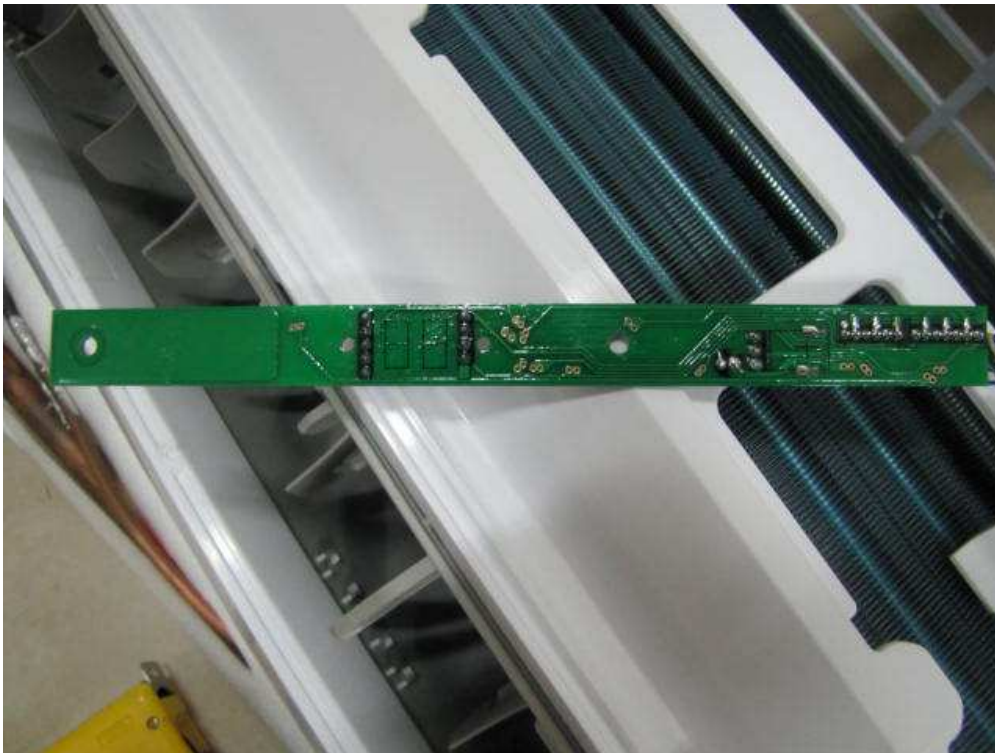
Front view of CH-S24FTX5



Open top cover view (display PCB board)



Display PCB



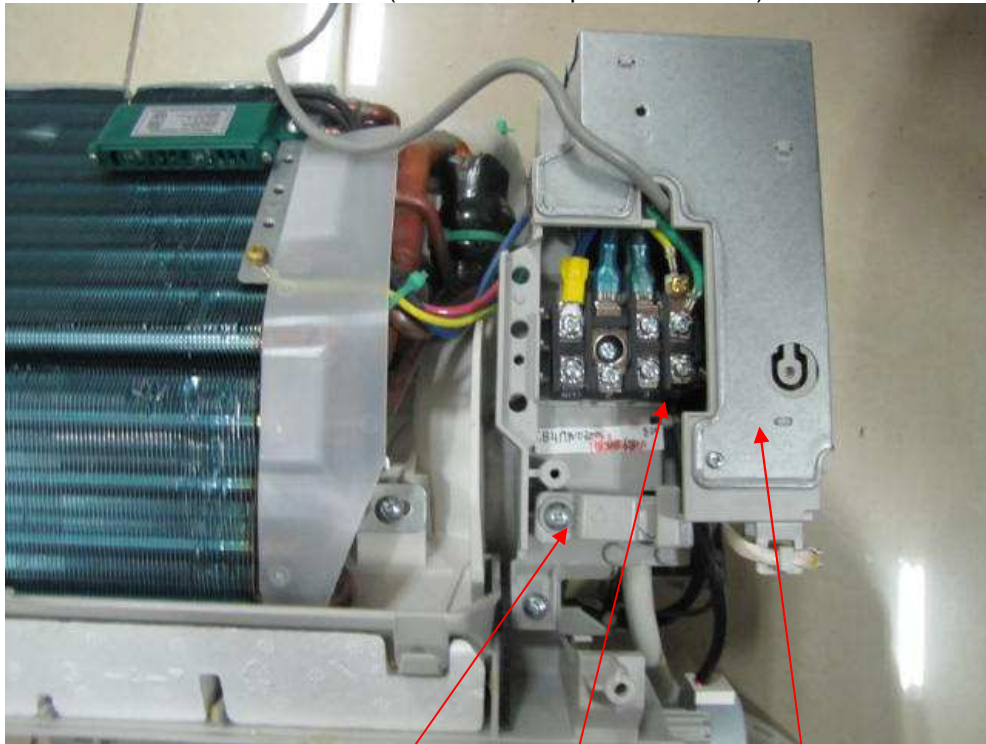
Display PCB



Internal view (location of Cold Plasma Generator, swing fan motor)



Internal view (location of temperature sensor)



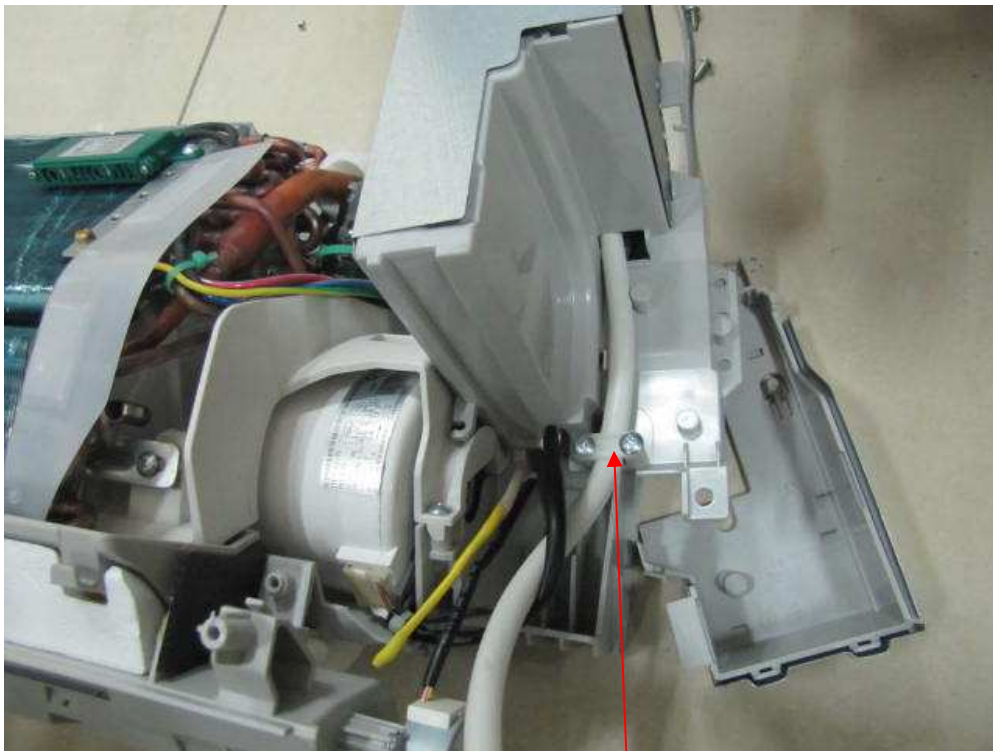
Internal view (interconnection cord anchorage, earthed marking, Main PCB box)



Earthed marking



Internal view (Main PCB)

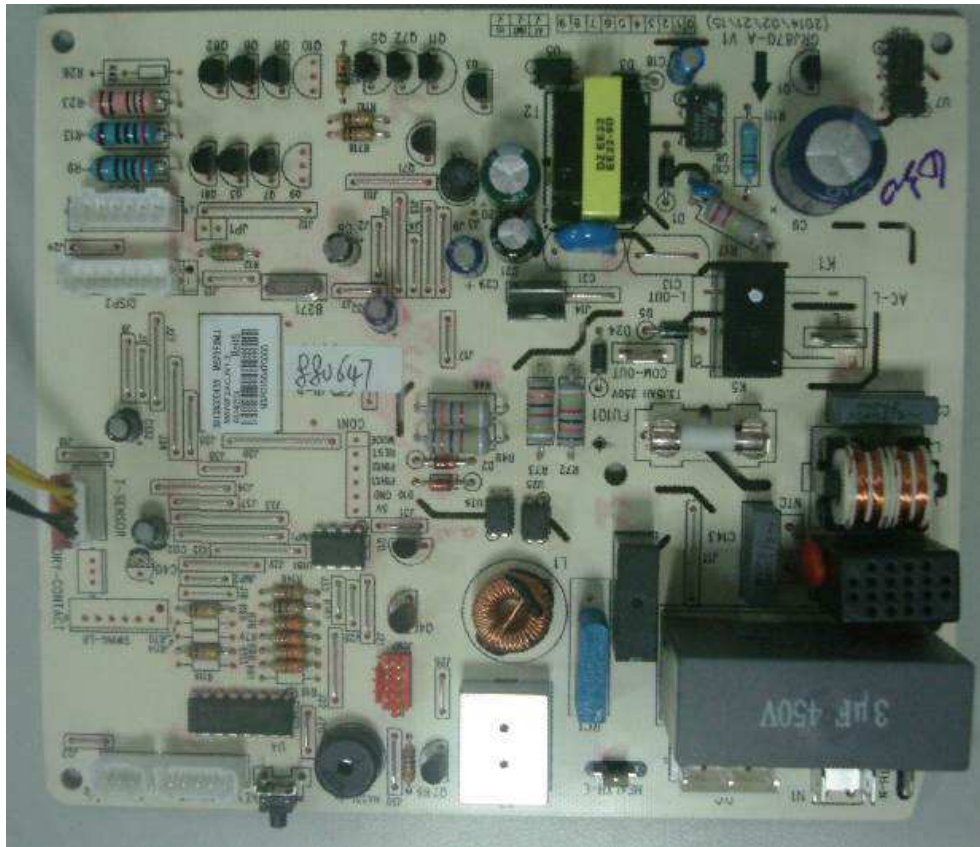


Internal view (Fan motor and cord anchorage)

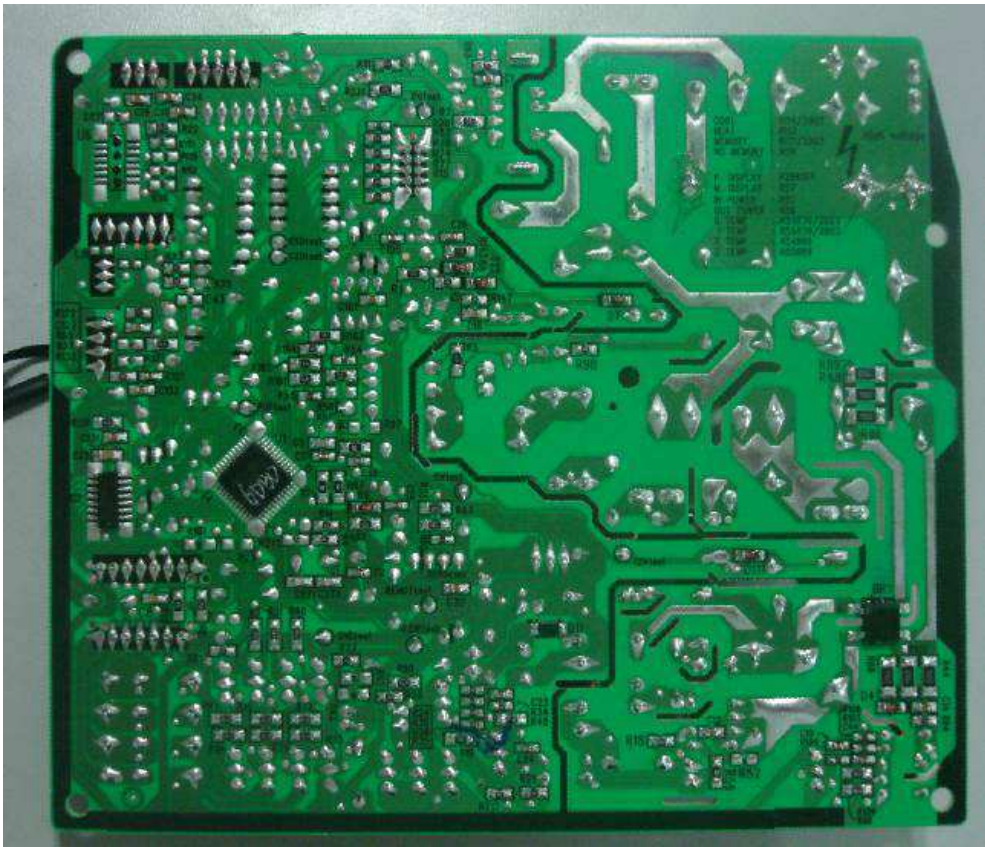


Fan motor



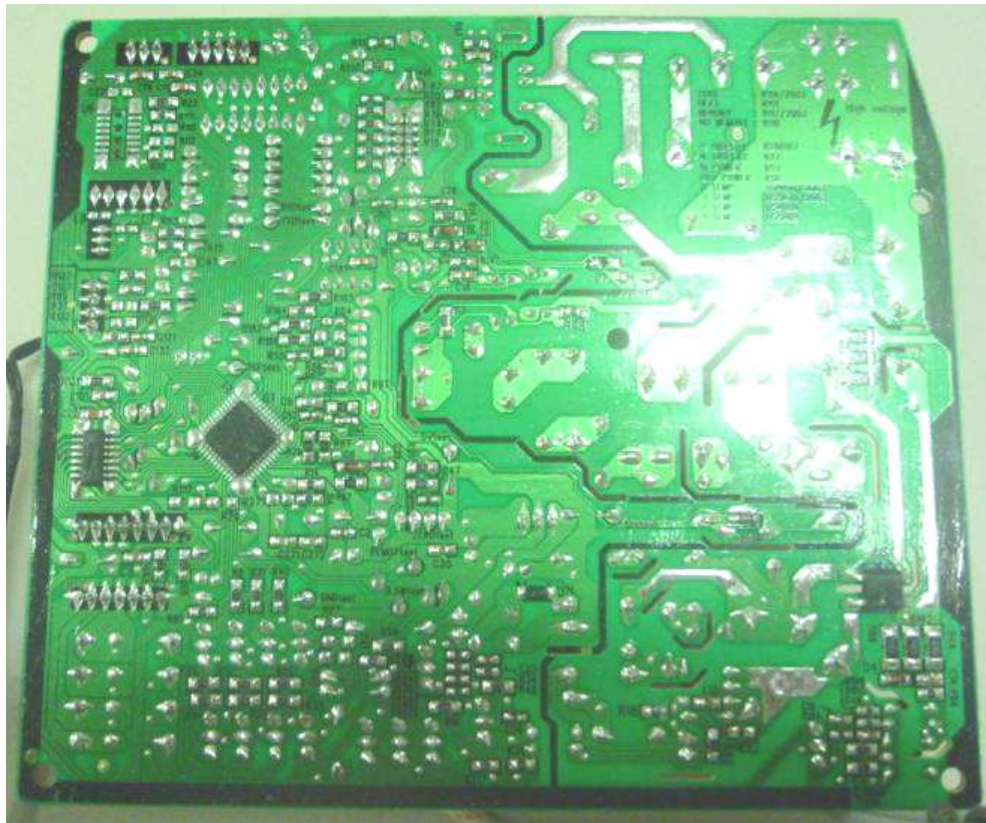


Main board M870F2HJ

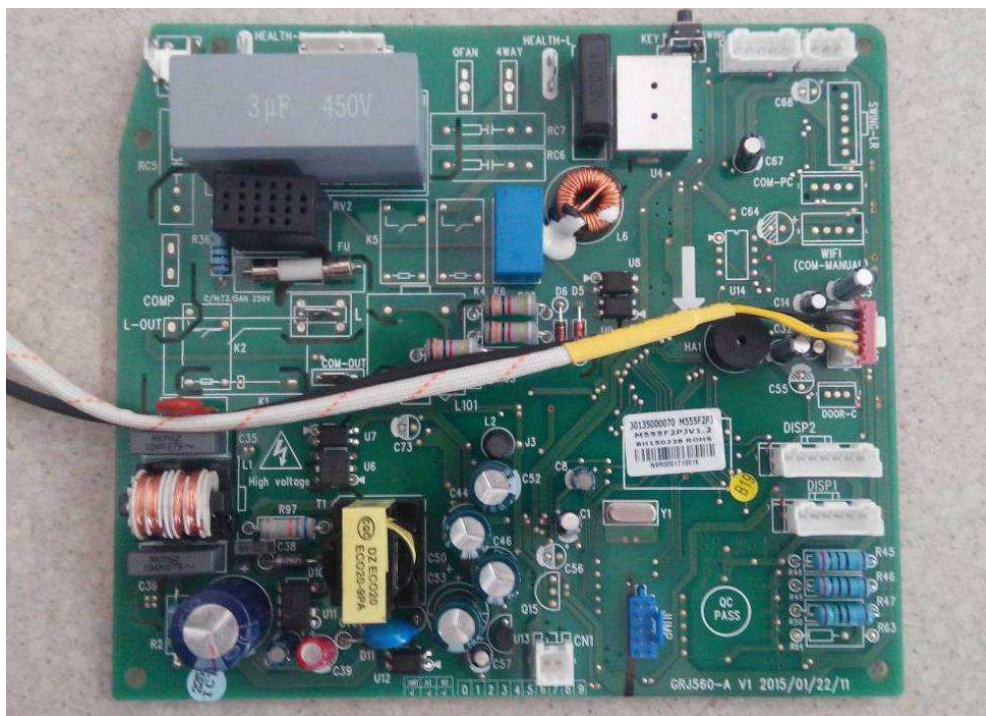


Main board M870F2HJ

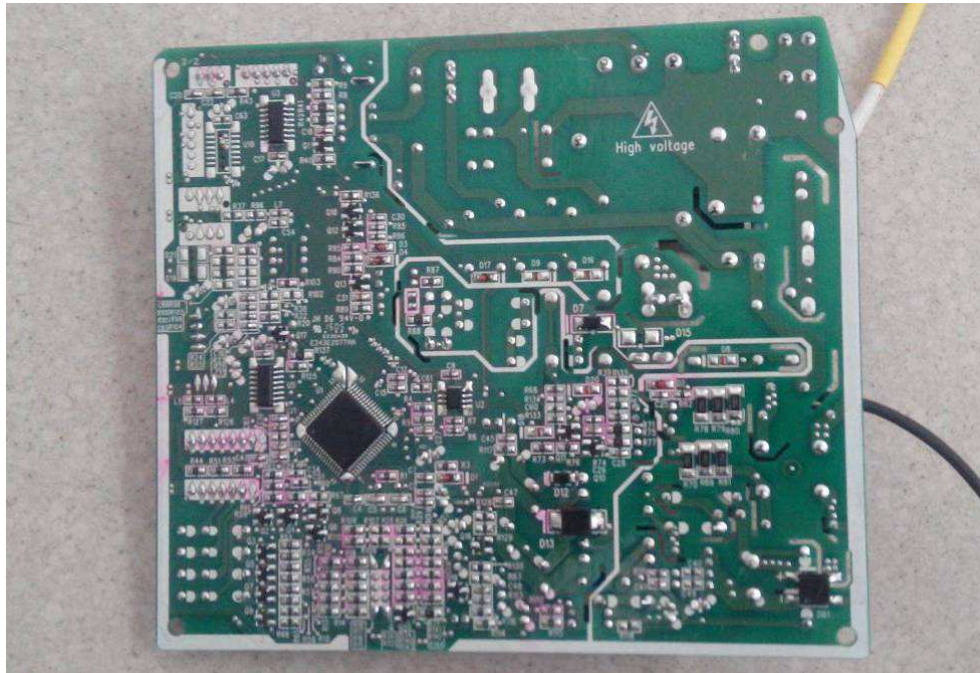




Main board M870F2PJ



Main board M555F2RJ



Main board M555F2RJ

Outdoor unit:



CH-S24FTXLA



CH-S24FTX5



Side view



Top, rear and side view



Internal view (earthed marking, cord anchorage)



Open top cover view (main PCB box)



Main PCB





Main PCB



Internal view



Fan motor



Internal view (compressor, 4 way valve)



Compressor



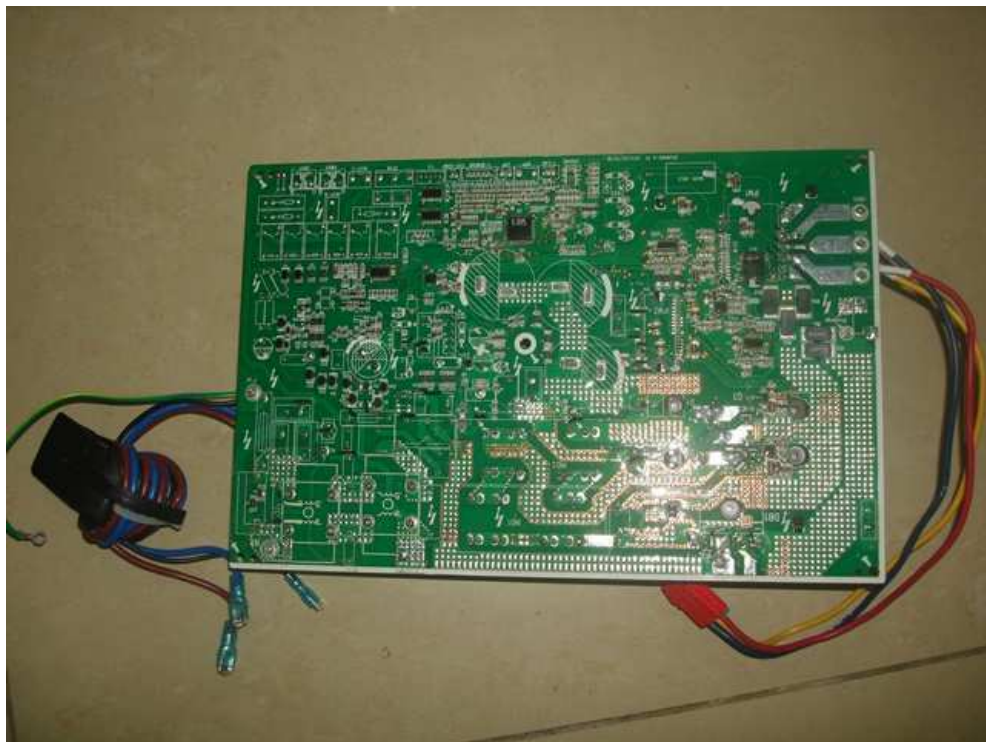
Main board W8603E with electrical heat belt



Main board W8603E with electrical heat belt



Main board W8602B without electrical heat belt



Main board W8602B without electrical heat belt

\*\*\*\*\* End of Report \*\*\*\*\*